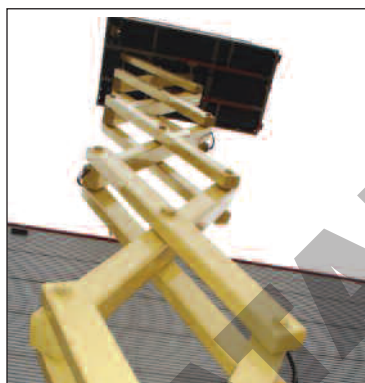


P R E L I M I N A R Y S P E C I F I C A T I O N S

- Working height from 17 m to 34 m
- Hydraulic extension deck
- NIVOLUX outrigger system
- Slope sensor
- Scissor Arm Guards (within chassis frame)
- Removable control box
- Fold-down railings
- Hydraulic brakes
- Proportional drive control
- Motor diagnosis system



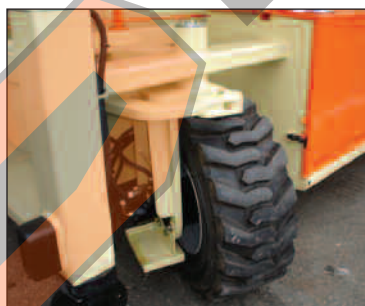
The LIFTLUX Triple scissor arm design provides the elevated platform with a unique stiffness & lateral rigidity. The machine provides more comfort for the user, and an increased work load capacity .



Most units have a big single hydraulic extension deck to increase work space (up to 7.2 m), providing more outreach than some twin decks (up to 2.85 m).



LIFTLUX machines are delivered with standard 4 wheel drive, differential lock and wide foam filled tyres for improved rough terrain capability.



The NIVOLUX outrigger device allows a +/- 0.1 ° automatic self-leveling of the unit on slopes and uneven ground, reducing the time taken to position the machine.



JLG Industries, Inc.
 Kilmartin Place, Tannochside Park,
 Uddingston, G71 5PH, Scotland,
 United Kingdom
 Tel: +44 (0) 1698 811005
 Fax: +44 (0) 1698 811055
 e-mail address: europe@jlg.com



www.jlg.com

P R E L I M I N A R Y S P E C I F I C A T I O N S

LIFTLUX SCISSOR LIFTS

	153-22	203-24	210-25	245-12	245-25	260-25	320-30
Platform Height - Elevated	15.30 m	20.30 m	21.00 m	24.50 m	24.50 m	26.00 m	32.00 m
Platform Height - Lowered	2.25 m	2.66 m	3.00 m	3.10 m	3.10 m	3.10 m	3.55 m
Platform Railing Height	1.10 m	1.10 m	1.10 m	1.10 m	1.10 m	1.10 m	1.10 m
Stowed Height (Rails Folded)	2.54 m	2.96 m	3.00 m	3.10 m	3.16 m	3.10 m	3.50 m
Platform size	2.20 m x 4.35 m	2.30 m x 4.35 m	2.50 m x 5.35 m	1.17 m x 5.10 m	2.50 m x 5.35 m	2.50 m x 6.50 m	2.90 m x 7.85 m
Platform Length fully extended	7.20 m	7.20 m	7.55 m	7.54 m	7.55 m	9.60 m	11.00 m
Overall Width	2.26 m	2.40 m	2.50 m	1.24 m	2.50 m	2.50 m	3.00 m
Overall Length	4.52 m	4.80 m	5.74 m	5.37 m	5.74 m	6.88 m	8.40 m
Wheelbase	3.00 m	3.13 m	3.90 m	3.93 m	3.90 m	4.75 m	5.90 m
Ground Clearance	0.28 m	0.30 m	0.30 m	0.20 m	0.30 m	0.40 m	0.45 m
Platform Capacity	750 kg	750 kg	1,000 kg	600 kg	750 kg	1,000 kg	1,400 kg
Capacity on Deck Extension	500 kg	500 kg	750 kg	600 kg	750 kg	1,000 kg	1,000 kg
Lift/Lower Time	40 / 55 sec	60 / 50 sec	85 / 80 sec	125 / 120 sec	90 / 70 sec	70 / 80 sec	116 / 120 sec
Maximum Drive Height	15.30 m	17.00 m	21.00 m	14.00 m	21.00 m	21.00 m	20.00 m
Deck Extension	Hydraulic	Hydraulic	Hydraulic	Hydraulic	Hydraulic	Hydraulic	Hydraulic
Gross Vehicle Weight ¹	9,060 kg	11,400 kg	14,800 kg	15,350 kg	16,300 kg	24,700 kg	39,800 kg
Drive Speed - Lowered 2WD	3.8 km/h	3.8 km/h	2.8 km/h	2.0 km/h	2.8 km/h	3.0 km/h	3.0 km/h
Drive Speed slow 4 WD	1.5	1.5	1.5	1.5	1.5	1.5	1.5
Drive Speed - Elevated	0.8	0.5	0.5	0.5	0.5	0.5	0.5
Gradeability	35%	30%	25%	25%	25%	35%	20%
Turning Radius - Inside	0.70 m	0.70 m	1.25 m	0.65 m	1.25 m	1.50 m	1.85 m
Turning Radius - Outside	4.80 m	4.80 m	6.0 m	4.30 m	6.00 m	7.00 m	8.70 m
Axle Oscillation	–	–	0.15 m	–	0.15 m	0.13 m	0.13 m
Tyres	14 x 17.5	14 x 17.5	20 x 46 x 16 315/80 R22.5	28 x 10 x 22	20 x 46 x 16 315/80 R22.5	13.00 - 20 A	54 x 21.0 - 24
Diesel Engine	27.5 kW Deutz F3L1011	27.5 kW Deutz F3L1011	37 kW Deutz F4L1011	22.5 kW Deutz F4M1008 F	37 kW Deutz F4L1011	48.5 kW Deutz BF4L2011	78 kW Deutz F6L912
Fuel Tank Capacity	90 L	135 L	90 L	60 L	90 L	90 L	200 L
Hydraulic Reservoir	135 L	135 L	260 L	135 L	260 L	450 L	450 L

¹ Certain options or country standards will increase weight.

Specifications may change to meet country standards or with the addition of optional equipment.



Standard Features and Available Options
Liftlux Scissor Lifts

	153-22	203-24	210-25	245-12	245-25	260-25	320-30
Platform							
1.17 m x 5.10 m platform	-	-	-	●	-	-	-
2.20 m x 4.35 m platform	●	-	-	-	-	-	-
2.30 m x 4.35 m platform	-	●	-	-	-	-	-
2.50 m x 5.35 m platform	-	-	●	-	●	-	-
2.50 m x 6.50 m platform	-	-	-	-	-	●	-
2.90 m x 7.85 m platform	-	-	-	-	-	-	●
Single powered deck extension	●	●	●	-	●	●	●
Manual deck extension	-	-	-	●	-	-	-
Manual deck extension	●	●	●	●	●	●	●
Fold down/drop handrails	●	●	●	●	●	●	●
Removable handrails	●	●	●	●	●	●	●
Inward swing gate	●	●	●	●	●	●	●
Lanyard attach points	●	●	●	●	●	●	●
Proportional drive control	●	●	●	●	●	●	●
Moveable and removable platform console box	●	●	●	●	●	●	●
Platform console function status LED's ¹	●	●	●	●	●	●	●
AC power cable to platform	●	●	●	●	●	●	●
Power & Transmission							
Deutz diesel F3L 1011 27.5 KW @ 2700 rpm	●	●	-	-	-	-	-
Deutz diesel F4L 1011 37 KW @ 2600 rpm	-	-	●	-	●	-	-
Deutz Lombardini diesel 22.5 KW @ 2900 rpm	-	-	-	●	-	-	-
Deutz diesel BF4L 2011 48.5 KW @ 2500 rpm	-	-	-	-	-	●	-
Deutz diesel F6L 912 78 KW @ 2500 rpm	-	-	-	-	-	-	●
Engine distress warning system	●	●	●	●	●	●	●
Spark ar resting muffler	●	●	●	●	●	●	●
Hydrostatic Transmission	●	●	●	●	●	●	●
Four wheel drive	●	●	●	●	●	●	●
Four wheel steer	-	-	-	●	-	-	-
Functional Equipment & Accessories							
1 degree tilt alarm and indicator light	-	-	-	●	-	-	-
3 degree tilt alarm and indicator light	●	●	●	-	●	●	●
Rim protector foam filled loader lug tread	●	●	●	●	●	●	●
33/15.50 x 16.5 high flotation tyres	○	○	○ ²	○ ²	○ ²	○ ²	○ ²
Oscillating rear axle	-	-	●	-	●	●	●
NIVOLUX self-levelling hydraulic outrigger system	●	●	●	●	●	●	●
Lifting /tie down lugs	●	●	●	●	●	●	●
Hour meter	●	●	●	●	●	●	●
Ground control selector switch with key lock	●	●	●	●	●	●	●
Noise reduction package	●	●	●	●	●	●	●
Full grease lubrication on all scissor arm bushings	●	●	●	●	●	●	●
Scissor maintenance prop	●	●	●	●	●	●	●
Tow package (drive disconnect)	●	●	●	●	●	●	●
ROESLER Data Collection Device	○	○	○ ²	○ ²	○ ²	○ ²	○ ²
Horn	●	●	●	●	●	●	●
Travel Alarm	●	●	●	●	●	●	●
Descent Alarm	○	○	○ ²	○ ²	○ ²	○ ²	○ ²
All motion alarm	○	○	○	○	○ ²	○ ²	○ ²
Platform work lights	-	-	-	-	-	-	-
Hydraulic oil cooler	-	-	-	-	-	-	-
Head and tail lights	-	-	-	-	-	-	-
Flashing amber beacon	○	○	○	○	○ ²	○ ²	○ ²
Catalytic Purifier Muffler	-	-	-	-	-	-	-
Cylinder bellows	-	-	-	-	-	-	-
Manual descent	●	●	●	●	●	●	●

● Standard ○ Option - Not Available

¹ Provides indicator LED lights at platform control console for lift, drive, tilt, hydraulic jacks and overload.

